



EVO II Dual 640T

Power. Efficiency. Reliability

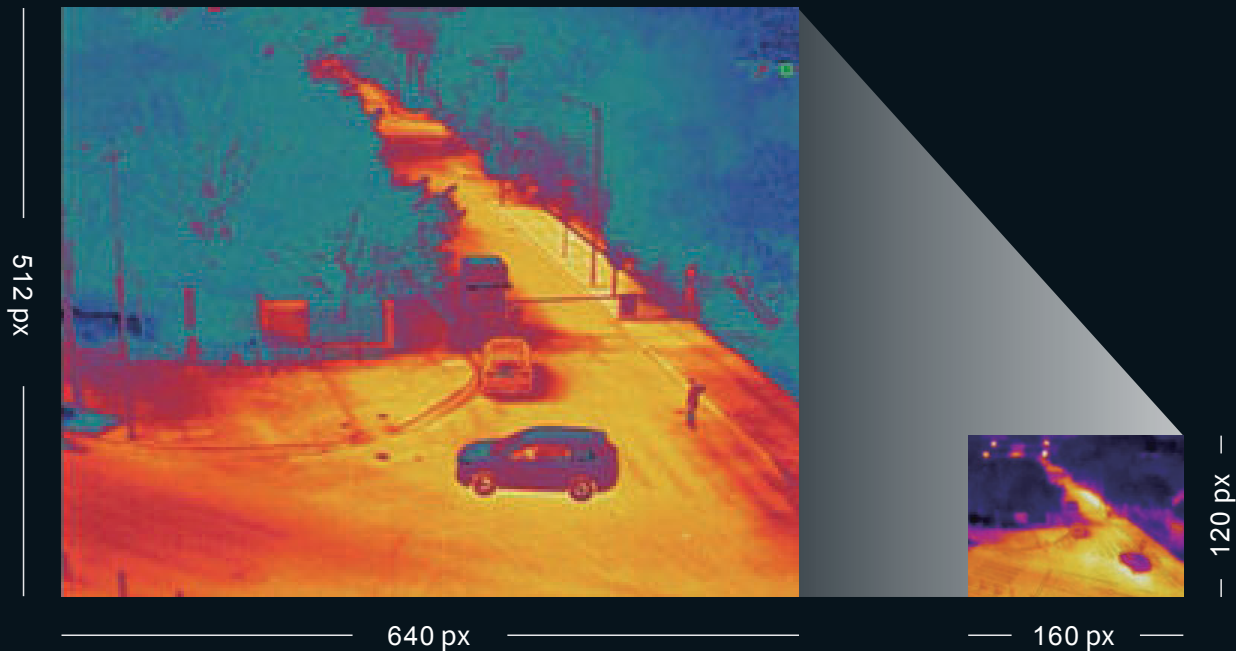
The Most Compact and Advanced Thermal Drone



The thermal camera provides greater resolution than any camera in its class.

640x512 THERMAL IMAGING SENSOR

The new generation of the Autel Robotics thermal imaging sensor has a resolution of up to 640x512@30 fps. It also comes standard with a 13mm lens, 16x digital zoom, and is capable of recognizing subjects at up to 100 m away.



Multiple Temperature Measurement Modes, Professional Analysis Tool



Central Temperature Measurement | Spot Temperature Measurement | Regional Temperature Measurement

Central temperature measurement: View real-time display of the temperature in the center area of the screen.

Spot temperature measurement: Tap the screen, and the temperature of the selected object will be displayed in real time.

Regional temperature measurement: Get a dynamic view of the average temperature, maximum temperature, and minimum temperature displayed in a selected area.



Temperature Alarm | Isotherm | Image Enhancement

Temperature alarm: Monitors the screen temperature in real time. The system prompts the user when the temperature reaches a set threshold. Isotherm: Set a temperature range and the system will detect any objects within the temperature range specified.

Image enhancement: Supports real-time adjustment of image brightness, contrast, and image details. The system will highlight any objects within the temperature target.



10 Thermal Color Palettes

White Hot | Cold and Hot | Rainbow | Enhanced Rainbow | Ironbow | Lava | Arctic | Searing | Gradation | Heat Detection



Powerful Infrared Thermal Analysis Tool

IRPC TOOL: This free temperature measurement analysis tool is developed for the 640T, and enables users to quickly import images, edit and analyze temperature measurements, and to generate detailed reports for sharing and collaboration.



Picture-in-Picture Mode (For Enhanced Situational Awareness)

Visual and thermal imagery are combined to help users quickly interpret data and aid in critical decision making.



8K allows even the smallest detail to be captured and preserved



8K Video, unmatched clarity

Autel Evo II Dual records in resolutions up to 7680x4320. With 4 times as many pixels compared to 4k (and 16 times compared to HD), 8k videos redefine image clarity and depth.

48MP Camera

The Evo II Dual's 48MP Sensor captures every forensic-relevant detail to assist in precise evidence capture. Both thermal and RGB images are provided with embedded Metadata making the EVO II Dual the ultimate Public Safety tool.

4x lossless zoom

Capable of long-range data acquisition and supports 4x lossless zoom, providing users with detailed imagery to enhance situational awareness.

4K HDR for greater dynamic range

4K HDR offers greater detail in highlights and shadows, providing higher-quality images from the most demanding environments.

360° Obstacle Avoidance

Equipped with 19 groups of sensors including 12 visual sensors, the main camera, ultrasound, IMUs and other sensors enable building of three-dimensional maps and path planning in real time.

Dynamic Track 2.0

EVO II can model location and speed of targets simultaneously, predict their trajectory accurately, and track them continuously while identifying up to 64 objects at the same time.



Applications



Line Inspections:

Reduce costs, increase safety,
and improve inspection workflow.



Firefighting

Locate hotspots, provide overwatch,
and shorten response times.



Law enforcement

Perform overwatch, accident scene reconstruction,
forensics, and crowd monitoring.

Specifications

Infrared camera sensor	Uncooled VOx Microbolometer	Camera resolution	Infrared mode: 640*512 Picture in Picture: 1920*1080, 1280*720
Sensor resolution	640x512	Photo shooting mode	Single shooting, continuous shooting, time-lapse shooting
Pixel pitch	12μm	Video Resolution	640*512 30fps
Wavelength range	8~14μm	Video format	MOV / MP4 (support H.264/H.265)
focal length	13mm	Temperature measurement accuracy	±3°C or ±3% of reading (whichever is greater) @ambient temperature -20°C~60°C
FOV	H33°V26°	Temperature range	High gain mode: -20° to +150°C Low gain mode: 0° to +550°C
Zoom	1-16X	Accurate temperature measurement distance	2-20 meters

Please note the following when switching to the EVO II Dual 640T from the EVO II Pro

*Firmware upgrade: You can download the firmware package on the official website or contact certified Autel Robotics dealers to upgrade to version 2.5.1.1 or above.

*Software upgrade: Please download Autel Explorer from the APP Store, Google Play or 360 mobile assistant.

*Thermal imaging analysis tool: You can download this from the official website or contact certified Autel Robotics dealers.

Excellent performance



BORN TO EXPLORE

www.autelrobotics.cn



38 minutes
battery life



5.5 miles
transmission range



Level 8 wind
resistance



45 mph
max flight speed



Magnesium
Alloy Structure